

Pedestrian Safety

Proposal

v.20191028

Helena has four major pedestrian crosswalks that have high pedestrian traffic. From low visibility of pedestrians attempting to cross roadways to motorist yielding rates; for the safety of our citizens, effective safety measures that will alert both drivers and pedestrians should be implemented to keep everyone safe.

- Proposal -

- Amend current fiscal year budget to use existing WFA funds to purchase Eco Rectangular Rapid Flashing Beacon (RRFB) Safety Systems from K & K Systems, Inc
 - Total cost for 8 units - \$20,033.32
- Removal of existing white crosswalk signs and posts at the 4 major crosswalks
- Install 8 new RRFB Safety Systems at the 4 major crosswalks
- Install used white crosswalk signs and posts at one secondary crosswalk
 - Helena Elementary School (State Highway 261)

- Major Crosswalks -

- Amphitheater (State Highway 261)
- Old Town – Closest to Railroad Track (State Highway 261)
- Old Town – Museum (State Highway 261)
- Hillsboro Parkway – Roundabout (City Street)

- Price Breakdown -

➤ 6 – Eco-RRFB (Push Button)	\$2,033.30
➤ 2 – Eco-RRFB (Radar)	2,464.88
➤ 8 – 36"x36" Pedestrian Sign	158.80
➤ 8 – Down Arrow Sign	74.08
➤ 8 – Crash Tested Post/Hardware	92.59
➤ 1 – Shipping Costs	300.00
TOTAL	\$20,033.32

- Benefits -

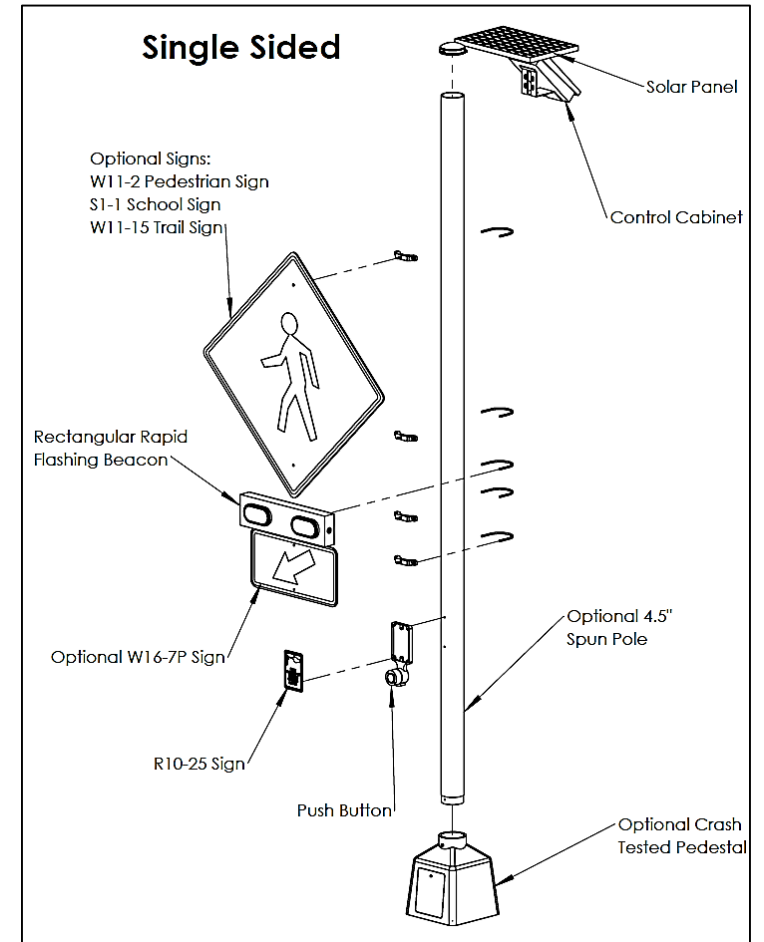
- RRFB features LED flashing beacons providing a high-visible stutter flash strobe like warning to drivers
- Push button activated by pedestrian, radar activated by vehicles, or controlled remotely when needing for an extended period of time
- Communication between signs to activate lights on both sides of roadway
- Solar powered making each unit self contained
- Florescent Yellow Green pedestrian signs
- Installation can be completed by the City

Pedestrian Safety

Proposal

v.20191028

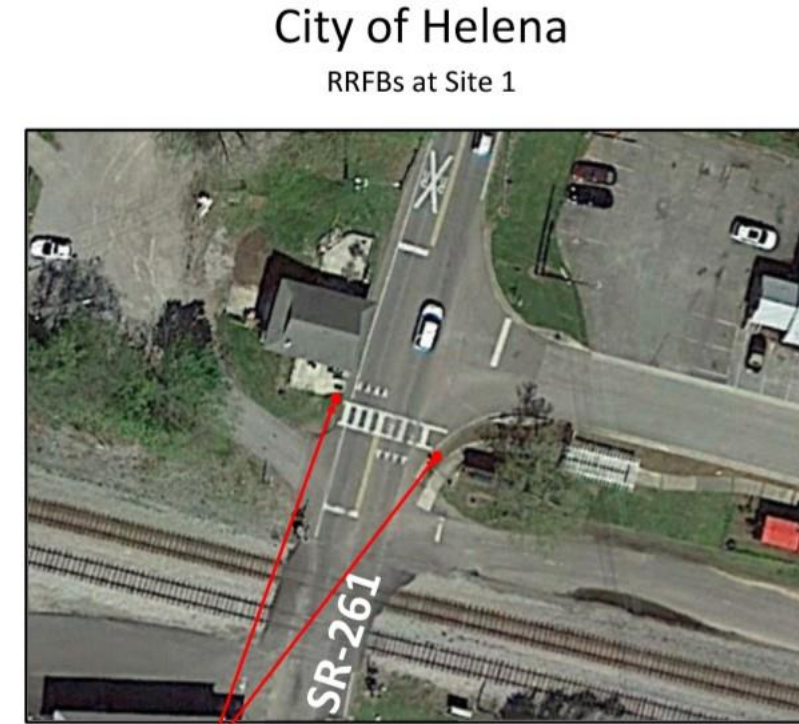
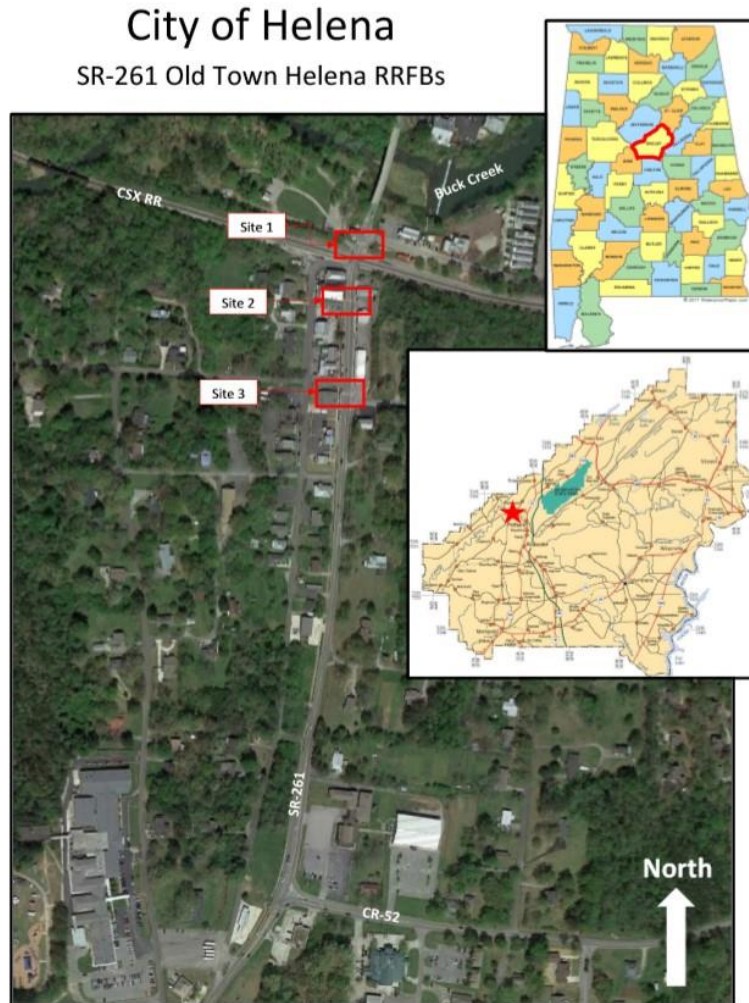
Visual representation of the complete Eco-Rectangular Rapid Flashing Beacon Safety System.



Pedestrian Safety

Proposal

Site maps for the three crossings on State Highway 261.



In-place YIELD HERE TO PEDS (R1-5) to be replaced with Rectangular Rapid Flashing Beacon (RRFB) assembly pole.

- Assembly to include:*
- PEDESTRIAN sign (W11-2)
 - RRFB
 - W16-7P
 - R10-25
 - Push button
 - Top mounted solar panel and control cabinet
- *See attached detail from K & K Systems*

Pedestrian Safety

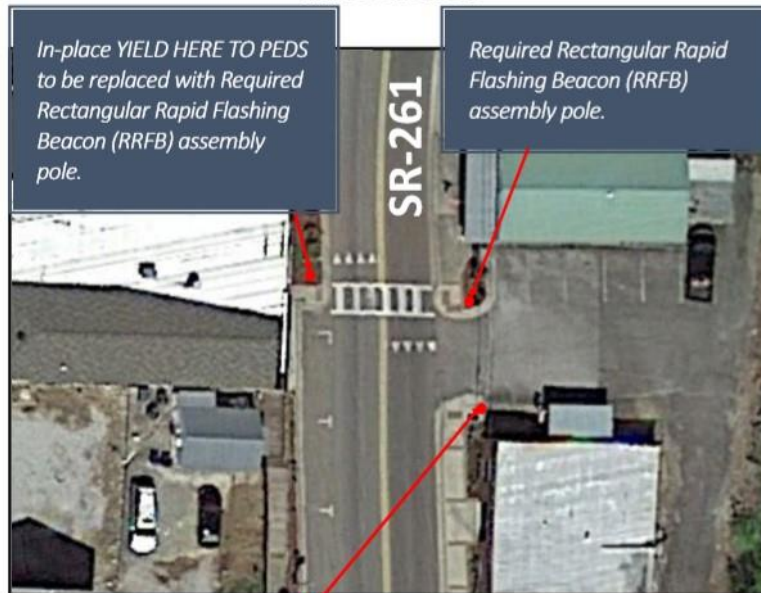
Proposal

v.20191028

Site maps for the three crossings on State Highway 261.

City of Helena

RRFBs at Site 2



In-place YIELD HERE TO PEDS to be replaced with Required Rectangular Rapid Flashing Beacon (RRFB) assembly pole.

Required Rectangular Rapid Flashing Beacon (RRFB) assembly pole.

In-place YIELD HERE TO PEDS (R1-5) to be removed.

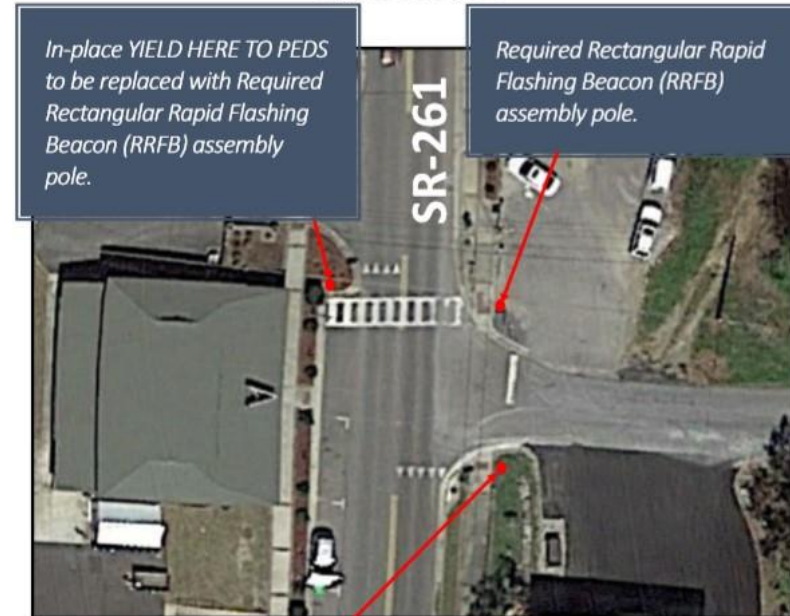
Assembly to include:

- PEDESTRIAN sign (W11-2)
- RRFB
- W16-7P
- R10-25
- Push button
- Top mounted solar panel and control cabinet

**See attached detail from K & K Systems*

City of Helena

RRFBs at Site 3



In-place YIELD HERE TO PEDS to be replaced with Required Rectangular Rapid Flashing Beacon (RRFB) assembly pole.

Required Rectangular Rapid Flashing Beacon (RRFB) assembly pole.

In-place YIELD HERE TO PEDS (R1-5) to be removed.

Assembly to include:

- PEDESTRIAN sign (W11-2)
- RRFB
- W16-7P
- R10-25
- Push button
- Top mounted solar panel and control cabinet

**See attached detail from K & K Systems*